



Scan QR code
to watch videos



- ***SMART INTERCONNECTION***
- ***ANTI-FREEZE TECHNOLOGY***



PROVIDE SOLUTIONS FOR AUTOMATED LASER CLEANING

LASER CLEANING MACHINE



1

NZ
Warehouse
Auckland

2

European
Warehouses
Munich

4

Chinese
Warehouses
North, Central and
South China

7

American
Warehouses
New Jersey,
Kentucky, Texas,
California 1, 2, 3

80+

Countries and
Regions
Worldwide
Sales

200+

Global
Employees
Talented
Educated
Dedicated

As our world has transformed to be internet and online focused, SFX has embraced distribution on platforms such as: Amazon, Ebay, Newegg and Walmart.

We currently export to 80+ countries and regions to include: New Zealand, USA, Canada, Germany, S. Korea, India, UK and Italy.



INTEGRATED LASER CLEANER

CONTINUOUS TYPE

Scan QR Code
to Watch Videos



CONTINUOUS WORKING WITHOUT BURNING THE LENS ; FLEXIBLE TO MOVE AND EASY TO CARRY

Features

- EU patent cleaning head, continuous working without burning the lens.
- Short focus, large scanning width design, low light attenuation and high efficiency.
- Ergonomic design, easy to push, convenient to move.
- Intelligent temperature control, direct cooling, energy saving.



Parameter

| Model | BLC-1500 | BLC-2000 | BLC-2000B | BLC-3000 |
|------------------------|----------|--|------------------------|-----------------|
| Laser Power | 1500W | | 2000W | 3000W |
| Laser Wavelength | | | 1080±10nm | |
| Laser Mode | | | Continuous/Modulation | |
| Smart Interconnection | No | No | Yes | No |
| Anti-Freeze Technology | No | No | Yes | No |
| Max. Frequency | | | 20KHz | |
| Fiber Cable Length | | 10-15m (customizable) | | 20m |
| Scan Width | | | 10-160mm | |
| Input Voltage | | AC 220V±10% | | AC 380V±7% |
| Input Power | <8000W | | <10000W | <13000W |
| Cooling Method | | Water cooling (deionized water, distilled water or purified water) | | |
| Water Tank Capacity | | | 16L (Add 14-15L water) | |
| Machine Dimension | | 905*480*630mm | | 1240*584*1148mm |
| Package Dimension | | 1120*565*1050mm | | 1430*720*1220mm |
| Total Weight | 145kg | | 169kg | 285kg |

Continuous Laser Cleaner Applications

It can be used to remove rust, stains, paint, oil stains, etc. on carbon steel, stainless steel, aluminum, floor tiles, walls and other materials. Suitable for applications where high-efficiency cleaning is required.



AIR-COOLED PULSE LASER CLEANING MACHINE

PULSED TYPE

HIGH-PRECISION AND FAST CLEANING. LIGHTWEIGHT, ENERGY-SAVING AND MAINTENANCE-FREE

Features

- Integrated air-cooled structure. Volume only 0.15m³.
- 6 preset cleaning processes + 3 custom ones.
- Double-wobble Cleaning Head Scanning width up to 190mm.
- High Power Density and Strong Output.

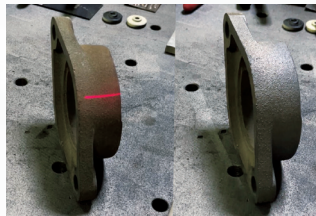
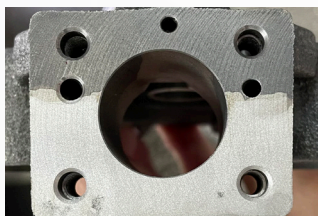
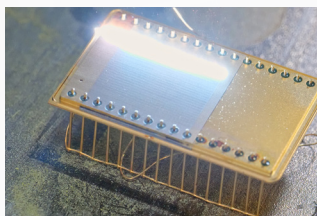


Parameter

| Model | AGC-300A | AGC-300 | AGC-500 |
|-------------------------|-------------------------|----------|-----------|
| Laser Power | 300W | | 500W |
| Laser Mode | Pulsed | | |
| Self-propelled function | Yes | No | No |
| Laser Wavelength | 1070±10nm | | |
| Pulse Width | 10-500ns | 20-500ns | |
| Frequency Range | 1-3000KHz | | 1-4000KHz |
| Fiber Cable Length | 5m (Customizable) | | |
| Scanning Width | 10-130mm | | 10-190mm |
| Input Voltage | AC110~220V±10%, 50/60Hz | | |
| Input Power | <2000W | | <3000W |
| Cooling Method | Air cooling | | |
| Ambient Temperature | 0°C -35°C | | |
| Ambient Humidity | 10%-80% | | |
| Machine Dimension | 580*430*630mm | | |
| Packaging Dimension | 700*500*770mm | | |
| Net Weight | ≤ 52kg | ≤ 54kg | ≤ 67kg |
| Gross Weight | ≤ 70kg | ≤ 72kg | ≤ 85kg |



Cleaning Effect



TROLLEY CASE LASER CLEANER

PULSED TYPE

Scan QR Code
to Watch Videos



FLEXIBLE AND EASY TO CARRY

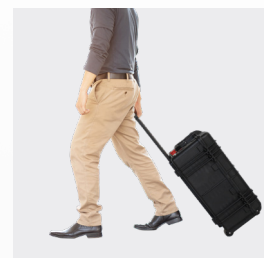
Features

- Integrated trolley case design, small size and easy to carry.
- A variety of laser graphics and tracks are optional, and there is no dead space for cleaning.
- Collimated laser beam output, accurate control, precise cleaning.
- Optional self-propelled function makes it easy for uniform and automatic cleaning.



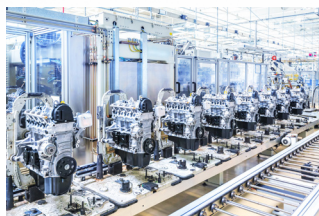
Parameter

| Model | LGC-200 | LGC-200A | LGC-300 | LGC-300A |
|----------------------------|-------------------------|----------|---------|----------|
| Laser Power | 200W | | 300W | |
| Laser Mode | Pulse | | | |
| Self-propelled function | No | Yes | No | Yes |
| Fiber Cable Length | 5m (Customizable) | | | |
| Cooling Method | Air Cooling | | | |
| Input Voltage | AC110~220V±10%, 50/60Hz | | | |
| Input Power | <1000W | | <1500W | |
| Anti-Reflection Protection | Yes | | | |
| Ambient Temperature | 0-35°C | | | |
| Ambient Humidity | 10%-80% | | | |
| Handheld Laser Head | 0.62kg | | 0.97kg | |
| Machine Dimension | 660*500*330mm | | | |
| Net Weight | 39kg | 40kg | 39kg | 40kg |



Pulsed Laser Cleaner Applications

Digitally controlled laser parameters which does not damage the substrate, avoid heating and micro-melting; it is suitable for cleaning coating, plating, oxide layers, paints, oil stains, etc., especially fine cleaning for corrosion-resistant, wear-resistant and difficult-to-clean materials after high temperature treatment.



HANDHELD LASER CLEANER

PULSED TYPE

WIDE CLEANING RANGE, WITHOUT DAMAGE TO THE SUBSTRATE, SUITABLE FOR FINE CLEANING

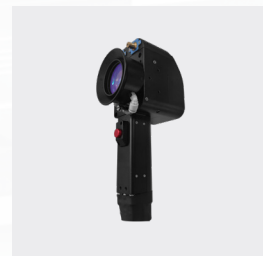
Features

- Accurate cleaning, without damage to the substrate, higher cleaning efficiency.
- Support 8 cleaning modes, applicable to complex applications.
- Extended IO can cooperate with manipulator to realize automatic cleaning.

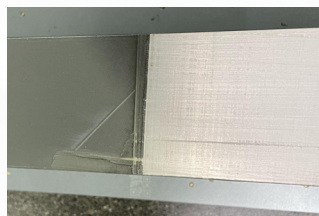
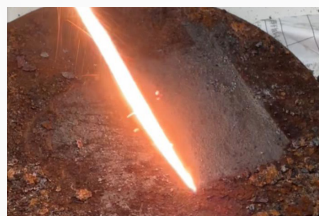


Parameter

| Model | BGC-300 | BPC-300 | BPC-500 | BPC-1000 |
|----------------------------|------------------------------|---------|---------------|----------------------|
| Laser Power | 300W | | 500W | 1000W |
| Laser Mode | Pulsed | | | |
| Laser Wavelength | 1060-1080nm | | | |
| Pulse Width | 10-500ns | | | |
| Frequency Range | 1-3000kHz | | 1-1000kHz | |
| Fiber Cable Length | 5m | | 10m | |
| Scanning Range | 10-100mm (F254 Len Standard) | | | |
| Cooling Method | Air Cooling | | Water Cooling | |
| Input Voltage | AC110~220V±10%, 50/60Hz | | | AC 220V±10%, 50/60Hz |
| Input Power | <2000W | <3000W | <4000W | <7000W |
| Anti-Reflection Protection | Yes | | | |
| Ambient Temperature | 0-35℃ | | | |
| Ambient Humidity | ≤ 80% | | | |
| Machine Dimension | 1010*600*1010mm | | | 1050*670*1070mm |
| Net Weight | 142kg | 160kg | 170kg | 228kg |



Cleaning Effect



BACKPACK LASER CLEANER **PULSED TYPE**

Scan QR Code
to Watch Videos



BACKPACK DESIGN, ERGONOMIC AND REDUCES OPERATING LABOR INTENSITY

Features >>>

- The cleaning head is only 750g Light to hold with fast cleaning.
- Lightweight backpack design, easy to carry.
- Optional battery, convenient for outdoor work.
- Optional self-propelled function makes it easy for uniform & automatic cleaning.

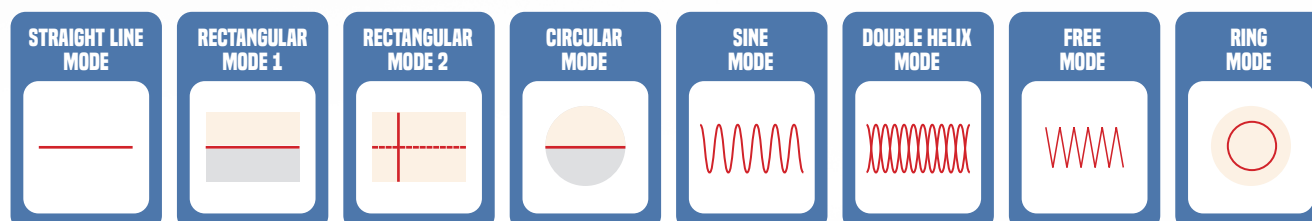


Parameter >>>

| Model | FGC-200 | FGC-200A |
|----------------------------|--|----------|
| Laser Power | >200W | |
| Laser Mode | Pulsed | |
| Movement Mode | Carrying | |
| Self-propelled Device | No | Yes |
| Fiber Cable Length | 1.5m | |
| Lens Focal Length | 254mm Standard Configuration, 160mm/210mm Optional | |
| Scanning Range | 10-80mm(160mm), 10-100mm(210mm), 10-130mm(254mm) | |
| Cooling Method | Air Cooling | |
| Power Supply | Direct power supply / battery power supply | |
| Input Voltage | AC110~220V±10%, 50/60Hz | |
| Input Power | <1000W | |
| Battery Powered | Lithium battery design(optional). Continuously work at full power for 1 hour | |
| Anti-reflection Protection | Yes | |
| Ambient Temperature | 0°C -40°C | |
| Storage Temperature | -10°C -60°C | |
| Machine Dimension | 400*582*155 mm | |
| Cleaning Head Weight | 0.62kg | |
| Total Carrying Weight | 21kg | |



8 Cleaning Modes >>>



PLATFORM AUTOMATIC LASER CLEANING MACHINE

PULSED TYPE

Scan QR Code
to Watch Videos



FOR REMOVING ADHESIVES OR COATINGS FROM THE SURFACE OF OBJECTS

Features

- Consistent energy with automatic focus control. Stable operation, uniform cleaning and high gloss.
- Digital matching cleaning. The laser frequency, galvanometer, and axial speed are matched.
- The whole machine adopts modular design. Stable performance and easy maintenance.
- 10 safety protection and early warning systems. Automated application, safe and stable.

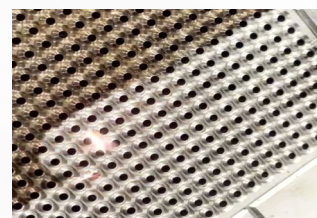
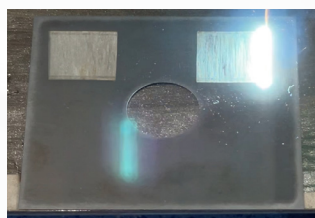
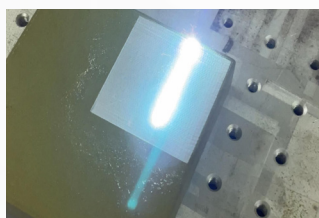


Parameter

| Model | DGC-200 | DGC-300 | DGC-500 |
|---------------------|-------------|---|-----------|
| Laser Power | 200W | 300W | 500W |
| Laser Mode | | Pulsed | |
| Laser Wavelength | | 1064±10nm | |
| Pulse Width | | 10-500ns | |
| Frequency Range | 1-4000kHz | 1-3000kHz | 1-1000kHz |
| Scanning Range | | 10-150mm (Optional field lens: 254mm, 330mm, 420mm, width up to 300mm) | |
| Cooling Method | Air cooling | Water cooling (Medium: Deionized water, distilled water or purified water) | |
| Workbench Size | | 1200*1000mm | |
| XYZ Stroke | | 800*300*300mm | |
| Input Voltage | | AC 220V+10%, 50/60Hz | |
| Input Power | <3000W | <3500W | <5000W |
| Water Tank Capacity | | 16L (14-15L of water to be added) | |
| Machine Dimension | | 1200*1000*1700mm | |
| Package Dimension | | 1800*1400*1900mm | |
| Net Weight | | 460kg | |



Cleaning Effect



FULLY ENCLOSED PLATFORM AUTOMATIC LASER CLEANING MACHINE **PULSED TYPE**

Scan QR Code
to Watch Videos



SMALL AND MEDIUM-SIZED WORKPIECES/COMPLEX WORKPIECES AUTOMATIC ONLINE CLEANING

Features >>>

- Remove floating rust, paint, oil and plating layer.
- Accurate positioning, uniform cleaning, high surface finish.
- Full range of CNC systems. Five-axis linkage, flexible operation.
- Fully automatic online cleaning with communication system.

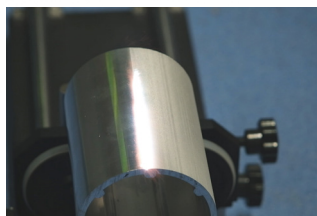
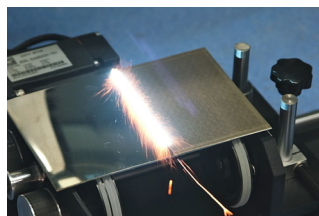


Parameter >>>

| Model | DGC-200A | DGC-300A | DGC-500A |
|---------------------|---|-------------------|---------------|
| Laser Power | 200W | 300W | 500W |
| Laser Mode | Pulsed | | |
| Laser Wavelength | 1064±10nm | | |
| Pulse Width | 10-500ns | | |
| Frequency Range | 1-4000kHz | 1-3000kHz | |
| Scanning Range | Standard Configuration Lens 330mm, Scanning Area 10-250mm. (Optional Lens 254mm, Scanning Area 10-175mm / 420mm, Scanning Area 10-300mm) | | |
| Cooling Method | Air Cooling | Air/Water Cooling | Water Cooling |
| Workbench Size | 1300*970mm | | |
| XYZ Stroke | 800*400*400mm | | |
| Input Voltage | AC 220V+10%, 50/60Hz | | |
| Input Power | <3000W | <3500W | <5000W |
| Water Tank Capacity | 16L | | |
| Machine Size | 1580*1440*1900mm | | |
| Packing Size | 1800*1600*2100mm | | |
| Net Weight | 580kg (Machine) 50kg (Chiller) | | |



Cleaning Effect >>>



OFF-ROAD LASER CLEANER

PULSED TYPE

Scan QR Code
to Watch Videos



STRONG PASSABILITY. SUITABLE FOR OUTDOOR AND FIELD OPERATIONS

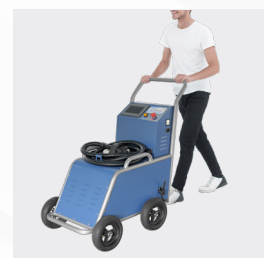
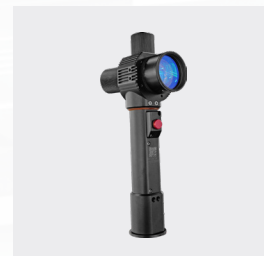
Features >>>

- Stable frame, effortless pushing and pulling, high-strength structure.
- Cleaning head, double protection design, reduce galvanometer damage. Only 620g.
- Large size tubeless tire, strong anti-seismic performance.

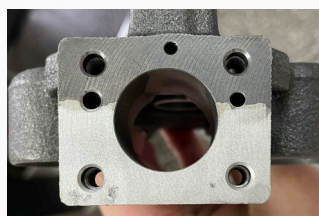


Parameter >>>

| Model | CGC-200 | CGC-300 |
|---------------------|-------------------------|----------|
| Laser Power | 200W | 300W |
| Laser Mode | Pulsed | |
| Laser Wavelength | 1060-1080nm | |
| Pulse Width | 10-500ns | |
| Frequency Range | 1-3000KHz | |
| Fiber Cable Length | 5m | |
| Scanning Range | 10-130mm | 10-100mm |
| Cooling Method | Air Cooling | |
| Input Voltage | AC110~220V±10%, 50/60Hz | |
| Input Power | 1500W | 2000W |
| Machine Dimension | 1170*660*1100mm | |
| Ambient Temperature | 0°C -35°C | |
| Ambient Humidity | 40%-80% | |
| Net weight | 82kg | 87kg |



Cleaning Effect >>>



LASER CLEANING AUXILIARY DEVICE

SOLVE THE PROBLEMS OF UNSTABLE HAND HOLDING AND UNEVEN CLEANING

Features >>>

- Stable Operation, even Cleaning, high Smoothness.
- Can realize reciprocation, fixed distance, following, etc. 9 cleaning operation modes.
- Multi-angle Adjustable, can also be used with a rotary axis for rotational cleaning.



Parameter >>>

| Model | JF-500 |
|----------------|-------------------------|
| Input voltage | AC110~220V±10%, 50/60Hz |
| X-axis travel | 500mm |
| Z-axis travel | 500mm |
| Running speed | ≤ 40mm/s |
| Packaging size | 800*340*380mm (L*W*H) |
| Net weight | 21kg |
| Gross weight | 34kg |



Unstable hand holding



Cleaning with auxiliary device

SFX[®] Provide solutions for automated laser cleaning

Customized Service Provide customized laser cleaning and welding solutions in various fields:



Aviation Parts / Ships / Automobile Manufacturing / Railway Tracks / Battery Manufacturing / Petroleum Industry / Generating Sets / Cultural Relics Restoration / Tire Molds / Semiconductors

Professional Test Reliable, stable and durable quality, passed many strict tests in the industry



*Due to product update iterations, there will be differences in appearance and parameters, please refer to the latest product in kind.

New Zealand Exclusive Distributor: Maxfits Trading Limited

3047 Great North Road, New Lynn, Auckland

021-242-4612 | 09-154-1888 | 021-235-6089

info@sfxnz.co.nz

www.sfxnz.co.nz



01007N